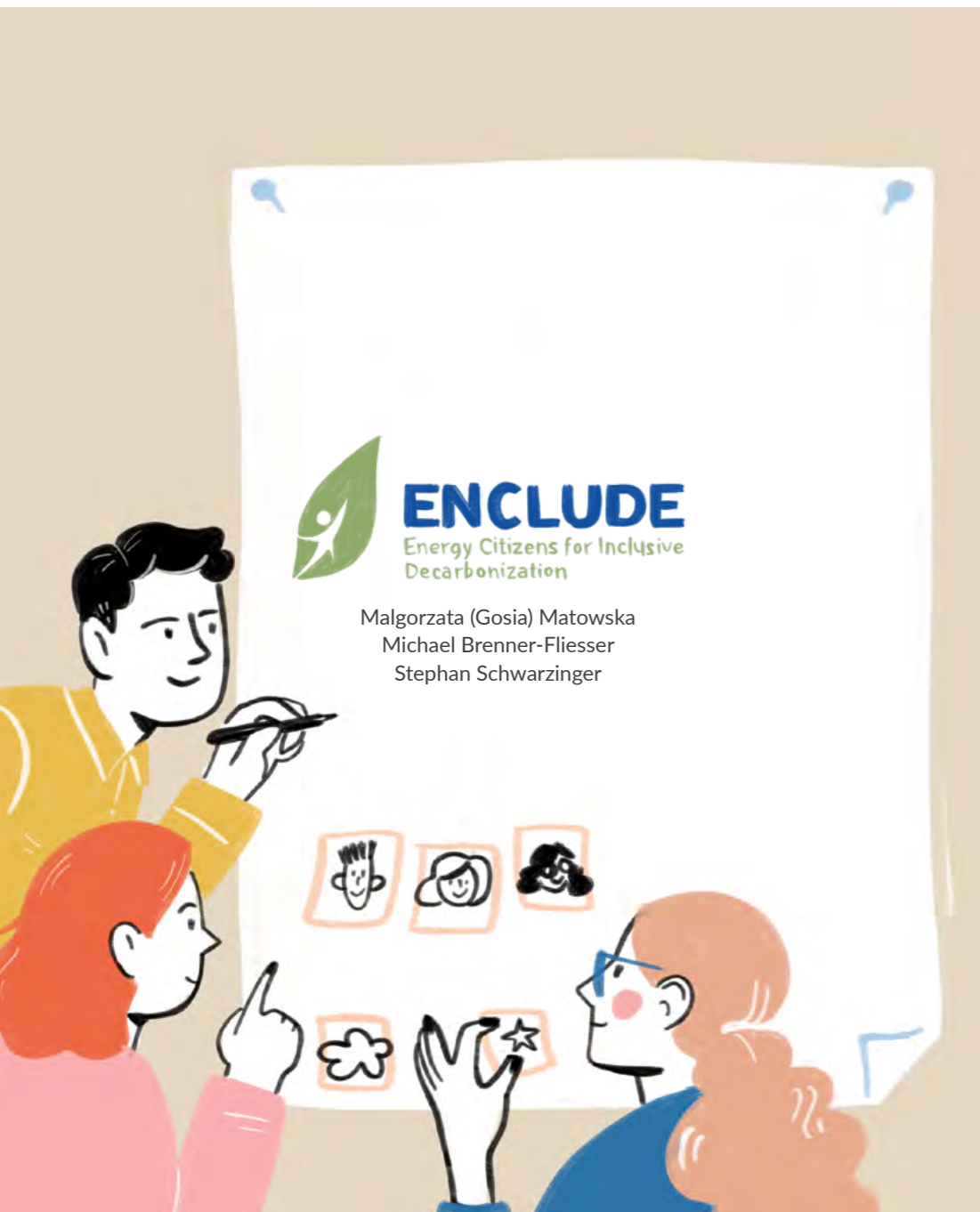


## Improvement potential:



Citizens at the heart of the energy transition  
Uncovering Motivations and Barriers for Collective Energy Initiatives

### ©2023 ENCLUDE project

All rights reserved. No part of this publication may be reproduced, stored in a retrieval system or transmitted in any form or by any means, electronic, mechanical, photocopying, recording or otherwise without the prior permission of the publisher or in accordance with the provisions of the Copyright, Designs and Patents Act 1988 or under the terms of any licence permitting limited copying issued by the Copyright Licensing Agency.



The ENCLUDE project has received funding from the European Union's Horizon 2020 Research and Innovation Programme under grant agreement No 101022791.

### Self published by Th!nk E

Written by Malgorzata (Gosia) Matowska (Th!nk E), Michael Brenner-Fliesser (JOANNEUM RESEARCH), Stephan Schwarzingler (JOANNEUM RESEARCH).

Graphic design: Agata Smok (Th!nk E).

Printed on a woodfree, Cradle to Cradle Certified® paper in Ghent, Belgium.



# CITIZENS AT THE HEART OF THE ENERGY TRANSITION

Uncovering Motivations and Barriers for Collective Energy Initiatives

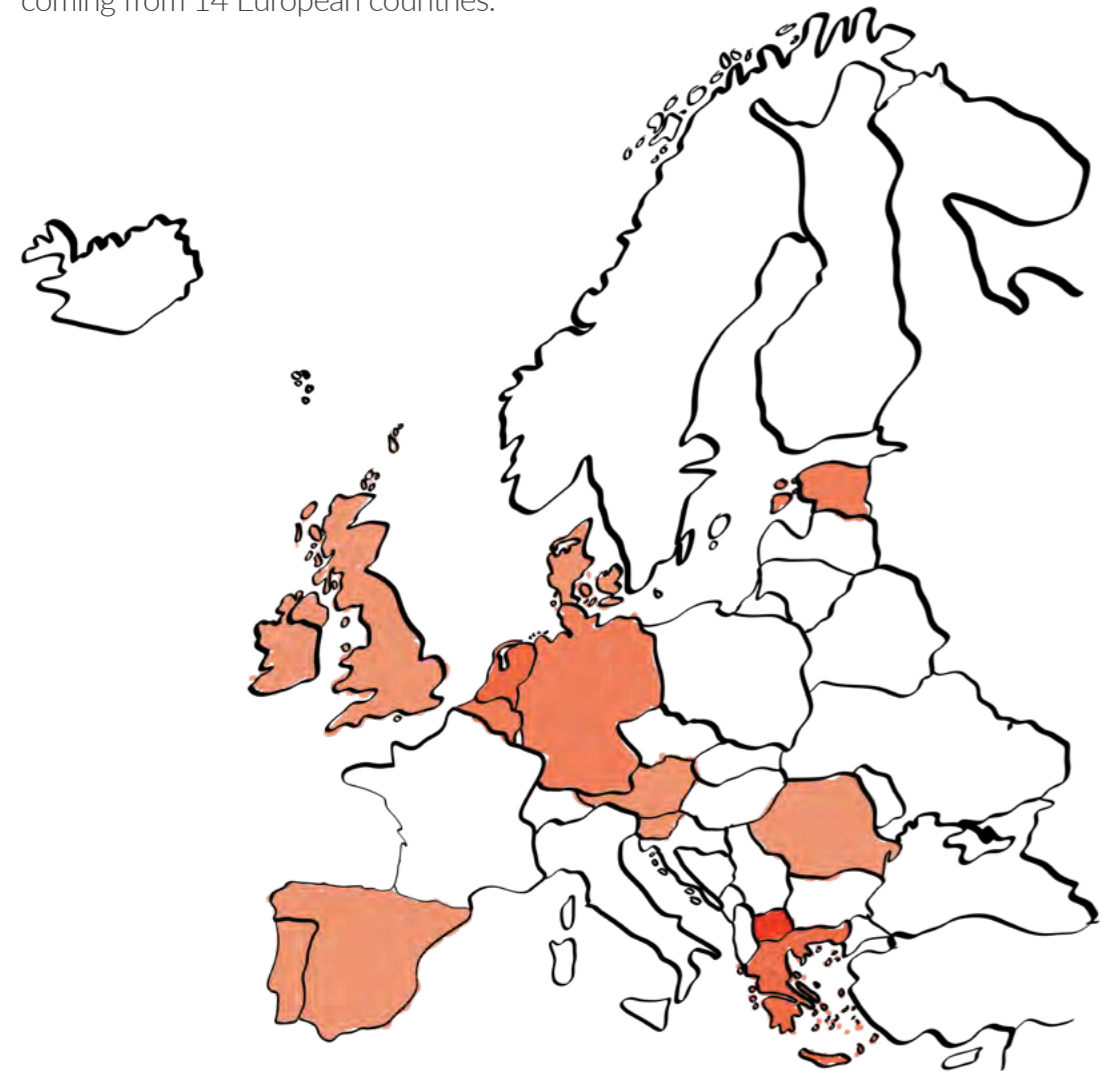


Malgorzata (Gosia) Matowska  
Michael Brenner-Fliesser  
Stephan Schwarzingler





Answers based on **280 questionnaires**, coming from 14 European countries:



Responses per country:  
● <10   ● 10-40   ● 40-70   ● >70

### ENERGY COMMUNITIES AND ECO-FARMS (ECS):

<b>Activity</b>	<b>Production, storage, distribution</b> or <b>optimization</b> of sustainable energy, including sustainable farming practices that reduce energy and water needs.
<b>Ownership</b>	The ownership of assets is rather <b>equally shared</b> between members.
<b>Drivers</b>	<b>Community aspects</b> are central to the case, such as clear rules for decision making and choosing of leadership, clearly defined roles, and democratic participation. High <b>pro-environmental</b> motivation.



### COLLECTIVE TARGETED ACTIONS (CTAs):

Implementation of solutions for the <b>production, storage, distribution</b> or <b>optimization</b> of energy, including energy efficiency solutions, renovation, as well as trainings and demonstrations aiming to create awareness on energy issues.
Participants have <b>very limited contribution</b> to the decision making / participation is not primarily based on the principles of community, decision-making is primarily top-down.
High <b>pro-environmental</b> motivation.



### POLITICAL AND SOCIAL MOVEMENTS (PMS):

<b>Influence policy makers</b> towards certain goals connected to energy production, distribution, storage or optimization.
<b>No technical projects</b> are implemented.
Lower environmental motivation than members of ECS and CTAs, stronger <b>focus on self-sufficiency</b> .

